



Part of the Energy Queensland Group



Operational Update

Ergon Contestable Works Ergon work & Network info

Issue # C-0013 – 27/05/2020

Target Audience:

Ergon – Accredited Design Consultants

Introduction:

- Ergon Works Schedule
- Ergon Network Maps

Ergon Works Schedule

To enable Ergon to readily and accurately identify Ergon works associated with a contestable Subdivision or Street lighting project, contestable works designs are required to have an Ergon Works Schedule separate to the main schedules. These changes assist in the preparation of the Test & Commissioning works, and Ergon designs which are key to completing the customers project. A flow on effect is reduced time in the preparation of the contract (NCEC) which ultimately benefits your client, the Developer.

An example of a schedule that will be acceptable to use as an Ergon Works Schedule is below:

ERGON SCHEDULE OF WORKS						
STN NO	SITE LABEL	ACTION	CONSTRUCTION CLASS	CONSTRUCTION CODE	DRAWING NUMBER	REMARKS
1	123456	INSTALL	-	-	-	ERGON TO EXTEND OVERHEAD HIGH VOLTAGE FROM STN 1 TO STN 2
2	123457	INSTALL	HV POLE TERMINATION	11CTP/185T/M	9512	20M HV CABLE BURIED AT BASE OF POLE FOR ERGON TO TERMINATE ON POLE
3	258963	EXISTING	LINKING PILLAR	LVPL2/6/240	7251	ERGON TO CONNECT TO STN 3. OPEN POINT AT STN 3
9	258964	INSTALL	PILLAR 3-WAY & SL	LVPN3/6S/240	7253	ERGON TO CONNECT AT STN 9. OPEN POINT AT STN 12
19	123459	INSTALL	LINKING PILLAR	LVPN3/6S/240	7253	ERGON TO UPGRADE EXISTING PILLAR TO 3-WAY PILLAR AT STN 19

You will note both the underground, overhead and street lighting activities are in the one Ergon Work Schedule. This is satisfactory as the Ergon works are minimal in most subdivision and street light projects.

For larger projects where there are more Ergon activities it may be a better idea to separate schedules for UG, OH & SL activities. Ergon would expect the Design Consultant to determine if a number of Ergon Works Schedule is required when looking at the ease of a worker reading the schedule. Please contact us at ccg.contestable@ergon.com.au if you have a design with a significant number of Ergon works and you are unsure if more than one Ergon Works Schedule would be appropriate.

There may be instances where Ergon are required to undertake civil activities as part of the development. If that is the case then these works will certainly require their own schedule – Ergon Civil Works Schedule.

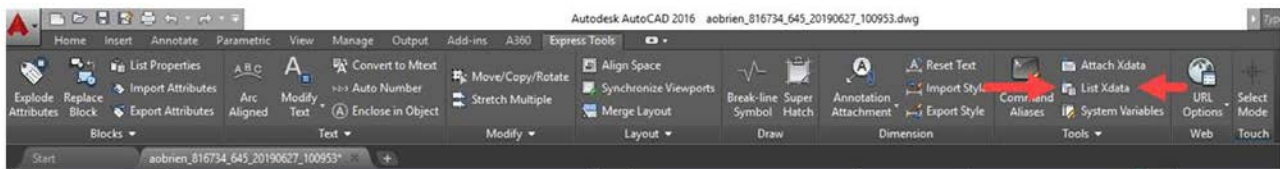
With these changes we hope to achieve a better outcome for all involved.

Ergon Network Maps

The AutoCad file we send contains additional information known as XData (Extended Entity Data). It may be available for both overhead and underground assets. XData is only available if the data is there in the first place.

The information on how to access XData I have provided below relates to AutoCad 2015 and later. You will need to do your own research to determine if the version you are using supports this feature. There is extensive information online regarding the use of this feature.

You can access XData by selecting the Express Tools tab and clicking on the *List Xdata* icon. You can also type XData in the command line on the bottom of the AutoCad screen.



You will need to select XData or type it in the command line for each item you are seeking the extended data for. The function does not stay on once selected. i.e once you have selected XData, and selected a cable to see the cable information, you will need to select XData again to look at another asset such as another cable, pole, transformer, street light etc.

Information regarding existing conduits will be supplied upon request. This information is not available in the AutoCad file.

Please note: the documents we provide showing details of the Ergon electrical distribution network are indicative only. As variations may exist on site, no responsibility is incurred by Ergon for the accuracy or completeness of the information provided to your office. The exact positions of Ergon overhead assets, underground assets including electrical connectivity and electrical circuitry shall be confirmed onsite by the Ergon Accredited Design Consultant.

For more information contact:
email: ccg.contestable@ergon.com.au