

# Whitsunday Network Upgrade Project - Construction Notice



28 June 2023

## What we are doing

As part of the Whitsunday Network Upgrade Project, we will be excavating sections of Broadwater Avenue, Mazlin Street, Summit Avenue and Shingley Drive.

This construction is required to install conduits for the new underground 66,000-volt electricity cable which will join up with the sections of conduit already installed at the foreshore – see Figure 1.

These works are recommencing this week and are scheduled to **take approximately 2 weeks to complete, with an expected completion date of Friday, 7<sup>th</sup> July 2023.**

Our aim is to complete this section of work prior to the Airlie Beach Triathlon Festival at the end of July.

## What to expect

During these works' road users, pedestrians, residents and nearby businesses can expect the following:

### *Impacts associated with this work includes:*

- **Open trench excavation along sections of Broadwater Avenue, Mazlin Street and Summit Avenue** using an excavator – see below images for the locations of excavation areas highlighted in **green**.
- To manage traffic flow and safety through the area, **traffic may be reduced to a single lane under 'stop-go' traffic control** around the work **sites**.
- Traffic signage indicating changed conditions and speed limits around the job site will be in place. Drivers can expect some delays during these works.
- There will be **an increase in vehicular traffic** in the area, with excavation plant and heavy vehicles, including trucks, working in and around Dalrymple Road.
- **Audible noise, dust and localised vibration** from excavation activities can also be expected during these works.
- **Access to driveways will remain open** and will be accessible under traffic control guidance for everyone's safety.
- **Reversing beepers and flashing lights** are a safety requirement and **will be always used** during works.
- For your safety and the safety of the workers on site, please adhere to traffic signs and directions, so that everyone can get home safely.



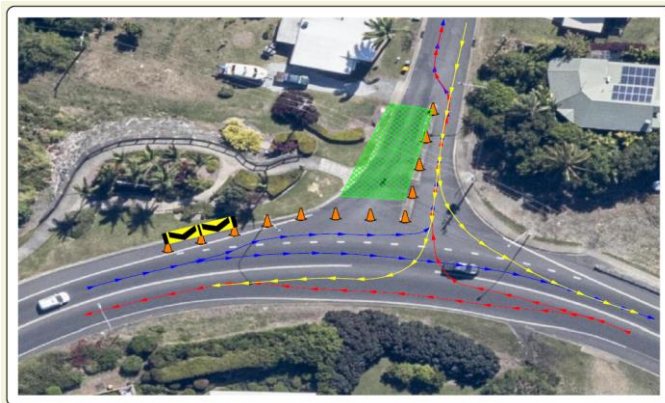
Figure 1 – A section of electrical conduit already installed adjacent to Broadwater Ave.



### Board water Avenue and Mazlin Street work site locations



### Summit Avenue worksites and traffic control arrangements



We thank you for your patience during these works. For everyone's safety, please drive safely and obey traffic signage and traffic controllers on site.

*Please note that all works are subject to weather and other site conditions and published timing may change.*



### Getting in touch with us

To keep up to date on the project, to provide feedback, or to register for future updates via email or SMS, scan the QR code or visit our project web page [Whitsundays network upgrade - Ergon Energy](#) . You can also contact our Senior Community Engagement Advisor, Kate Austin on 1300 653 055 or email us at: [NetworkProjectEngagement@energyq.com.au](mailto:NetworkProjectEngagement@energyq.com.au)

