

Community Update



January 2025

As part of our Local Network Battery Plan, we're installing a battery energy storage system in your community.

We're looking to the future.

Ergon Energy Network and Energex are investing in energy storage to support the growing level of rooftop solar energy systems in your area.

We've already installed six utility-scale 4MW/8MWh batteries across the state and currently have another twelve on the way.

Queenslanders are putting solar on their homes and businesses at world record rates, with more than 40% of houses already benefitting.

The clean energy generated could double by 2030, with well over a million rooftops exporting into our electricity networks as we transition to a net zero emissions future.

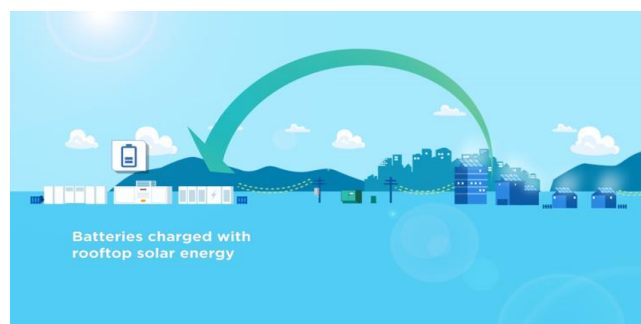
The batteries will enable more solar locally, without impacting on the security or stability of the local electricity network.

This is just one of the ways we are enabling the transition to renewable energy future and, ultimately, helping to keep electricity prices down.

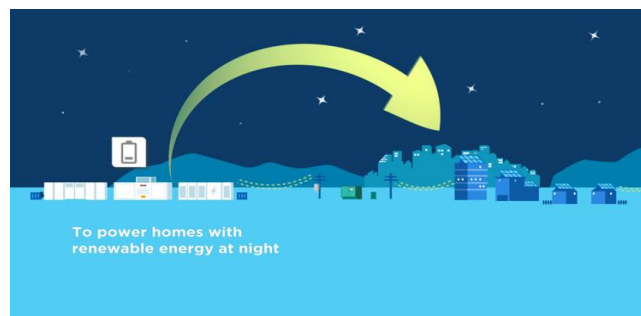
How will the batteries work?

They will soak up the excess solar energy generated by the community during the day and store it locally.

Then, when the sun goes down, the stored energy will go back into the grid for use during the evening peak when demand for electricity is high.



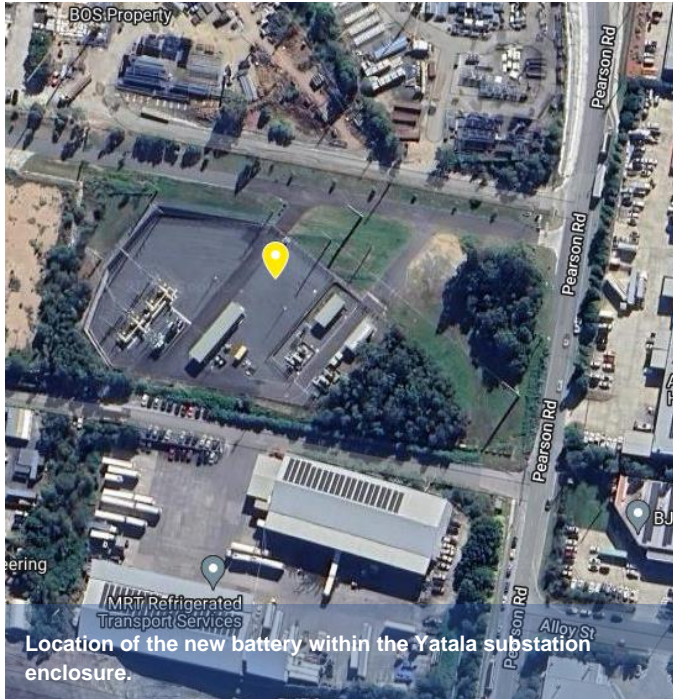
Batteries charged with rooftop solar energy



To power homes with renewable energy at night

Where is the battery being located?

The battery system will be located within the Energex substation on Pearson Rd, Yatala.



What will the battery look like?

The battery installation will have rows of modern, modular battery banks, with communications and electrical switching equipment secured within a perimeter fence.

**More
clean
energy.
Stored
locally.
Used
locally.**

Where is the project up to?

The project will soon be commencing early preparatory works such as ground clearing and other civil works, to prepare the site for the installation of the battery and the other electrical equipment in the coming months.

There will be an increase in heavy vehicle movement into and out of the site, as well as a range of site personnel working and parking in the area. Increased noise, dust, and localised vibration from machinery can be expected.

We thank the surrounding community in advance for their patience while this work proceeds. We are aiming, subject to weather and other constraints, to have the battery installed and operational by mid to late 2025.

Building batteries for cleaner power

Want to know more?

For more information on the Local Network Battery Plan and future updates on the Yatala battery:

- contact our community engagement team at NetworkProjectEngagement@energyq.com.au

