



Regulatory Investment Test for Distribution (RIT-D)

Addressing Reliability Requirements in the Cranbrook Network Area

Final Project Assessment Report

3 May 2023



Part of Energy Queensland

Addressing Reliability Requirements in the Cranbrook Network Area Final Project Assessment Report

EXECUTIVE SUMMARY

About Ergon Energy

Ergon Energy Corporation Limited (Ergon Energy) is part of Energy Queensland and manages an electricity distribution network which supplies electricity to more than 765,000 customers. Our vast operating area covers over one million square kilometres (around 97% of the state of Queensland) from the expanding coastal and rural population centres to the remote communities of outback Queensland and the Torres Strait.

Our electricity network consists of approximately 160,000 kilometres of powerlines and one million power poles, along with associated infrastructure such as major substations and power transformers.

We also own and operate 33 stand-alone power stations that provide supply to isolated communities across Queensland which are not connected to the main electricity grid.

Identified Need

Cranbrook 66/11kV Substation (CRAN) provides electricity supply to approximately 4,929 predominantly residential customers in the Townsville area, of which 91% are residential and 9% are commercial and industrial.

A recent condition assessment has highlighted that a number of critical assets are at end of life and are in poor condition. The condition of these assets presents a considerable safety and reliability risk.

Condition data indicates that the South Wales 11kV switchboard, the 66kV bus VT, one of the RTU's and a majority of the protection relays at CRAN are reaching end of life.

The deterioration of these primary and secondary system assets poses safety risks to staff working within the switchyard. It also poses a safety risk to the general public, though the increased likelihood of protection relay or 11kV CB mal-operation. Additionally, the poor condition of these assets significantly increases the likelihood of outages, resulting in a reduction in the level of reliability experienced by the customers supplied from CRAN.

Approach

The National Electricity Rules (NER) require that, subject to certain exclusion criteria, network business investments for meeting service standards for a distribution business are subject to a Regulatory Investment Test for Distribution (RIT-D). Ergon Energy has determined that network investment is essential in this case for it to continue to provide electricity to the consumers in the CRAN supply area in a reliable, safe and cost-effective manner. Accordingly, this investment is subject to a RIT-D.

One potentially feasible option has been investigated:

- **Option A:** Replace the 11kV switchboard, 66kV bus VT, RTU and protection relays.

Addressing Reliability Requirements in the Cranbrook Network Area Final Project Assessment Report

This Final Project Assessment Report (FPAR), where Ergon Energy provides both technical and economic information about possible solutions, has been prepared in accordance with the requirements of clause 5.17.4(o) of the NER.

Ergon Energy's preferred solution to address the identified need is Option A – Replace the 11kV switchboard, 66kV bus VT, RTU and protection relays.

Addressing Reliability Requirements in the Cranbrook Network Area Final Project Assessment Report

CONTENTS

Executive Summary	2
About Ergon Energy	2
Identified Need	2
Approach	2
1. Introduction	6
1.1. Structure of the Report.....	6
1.2. Dispute Resolution Process.....	6
1.3. Contact Details.....	7
2. Background	8
2.1. Geographic Region	8
2.2. Existing Supply System	9
2.3. Load Profiles / Forecasts	10
2.3.1. Full Annual Load Profile	10
2.3.2. Load Duration Curve	11
2.3.3. Average Peak Weekday Load Profile (Summer)	11
2.3.4. Base Case Load Forecast.....	11
2.3.5. High Growth Load Forecast	12
2.3.6. Low Growth Load Forecast.....	12
3. Identified Need	14
3.1. Description of the Identified Need.....	14
3.1.1. Aged and Poor Condition Assets	14
3.2. Quantification of the Identified Need.....	14
3.2.1. Aged and Poor Condition Assets	14
3.2.2. Risk Quantification Benefit Summary	14
3.3. Assumptions in Relation to Identified Need	15
3.3.1. Forecast Maximum Demand.....	15
3.3.2. Load Profile	15
4. Credible Options Assessed	16
4.1. Assessment of Network Solutions	16
4.1.1. Option A: Replace the 11kV switchboard, 66kV bus VT, RTU and protection relays.....	16
4.2. Assessment of Non-Network Solutions	16
4.2.1. Demand Management (Demand Reduction)	17

Addressing Reliability Requirements in the Cranbrook Network Area

Final Project Assessment Report

4.2.2.	Demand Response	17
4.2.3.	Non-Network Solution Summary	18
4.3.	Preferred Network Option	18
5.	Market Benefit Assessment Methodology	20
5.1.	Classes of Market Benefits Considered and Quantified	20
5.1.1.	Changes in Involuntary Load Shedding and Customer Interruptions caused by Network Outages	20
5.2.	Classes of Market Benefits not Expected to be Material	20
5.2.1.	Changes in Voluntary Load Curtailment	21
5.2.2.	Changes in Costs to Other Parties	21
5.2.3.	Differences in Timing of Expenditure	21
5.2.4.	Changes in Load Transfer Capacity and the capacity of Embedded Generators to take up load	21
5.2.5.	Changes in Network Losses	21
5.2.6.	Option Value	21
5.2.7.	Other Class of Market Benefit	22
6.	Detailed Economic Assessment	22
6.1.	Methodology	22
6.2.	Key Variables and Assumptions	22
6.3.	Net Present Value (NPV) Results	22
7.	Conclusion	23
7.1.	Preferred Option	23
7.2.	Satisfaction of RIT-D	23
8.	Compliance Statement	24
	Appendix A – The Rit-D Process	25

Addressing Reliability Requirements in the Cranbrook Network Area Final Project Assessment Report

1. INTRODUCTION

This Final Project Assessment Report has been prepared by Ergon Energy in accordance with the requirements of clause 5.17.4(o) of the NER.

This report represents the final stage of the consultation process in relation to the application of the RIT-D on potential credible options to address the identified need for the CRAN network area.

In preparing this RIT-D, Ergon Energy is required to consider reasonable future scenarios. With respect to major customer loads and generation, Ergon Energy has, in good faith, included as much detail as possible while maintaining necessary customer confidentiality. Potential large future connections that Ergon Energy is aware of are in different stages of progress and are subject to change (including outcomes where none or all proceed). These and other customer activity can occur over the consultation period and may change the timing and/or scope of any proposed solutions.

1.1. Structure of the Report

This report:

- Provides background information on the network capability limitations of the distribution network supplying the CRAN area.
- Identifies the need which Ergon Energy is seeking to address, together with the assumptions used in identifying and quantifying that need.
- Describes the credible options that are considered in this RIT-D assessment.
- Quantifies costs and classes of material market benefits for each of the credible options.
- Describes the methods used in quantifying each class of market benefit.
- Provides details of classes of market benefits that are not considered material to this RIT-D assessment and provides explanations as to why these classes of market benefits are not considered material.
- Provides the results of Net Present Value (NPV) analysis of each credible option and accompanying explanatory statements regarding the results.
- Identifies the proposed preferred option, including detailed characteristics, estimated commissioning date, indicative costs, and noting that it satisfies the RIT-D.
- Provides contact details for queries on this RIT-D.

1.2. Dispute Resolution Process

In accordance with the provisions set out in clause 5.17.5(a) of the NER, Registered Participants or Interested Parties may, within 30 days after the publication of this report, dispute the conclusions made by Ergon Energy in this report with the Australian Energy Regulator. Accordingly, Registered Participants and Interested Parties who wish to dispute the conclusions outlined in this report based on a manifest error in the calculations or application of the RIT-D must do so within 30 days of the publication date of this report. Any parties raising a dispute are also required to notify Ergon Energy. Dispute notifications should be sent to demandmanagement@ergon.com.au

Addressing Reliability Requirements in the Cranbrook Network Area Final Project Assessment Report

If no formal dispute is raised, Ergon Energy will proceed with the preferred option to replace the 11kV switchboard, 66kV bus VT, RTU and protection relays.

1.3. Contact Details

For further information and inquiries please contact:

E: demandmanagement@ergon.com.au

P: 13 74 66

Addressing Reliability Requirements in the Cranbrook Network Area

Final Project Assessment Report

2. BACKGROUND

2.1. Geographic Region

Cranbrook 66/11kV Substation (CRAN) provides electricity supply to approximately 4,929 predominantly residential customers in the Townsville area, of which 91% are residential and 9% are commercial and industrial.

The geographical location of Ergon Energy's sub-transmission network and substations in the area is shown in Figure 1.

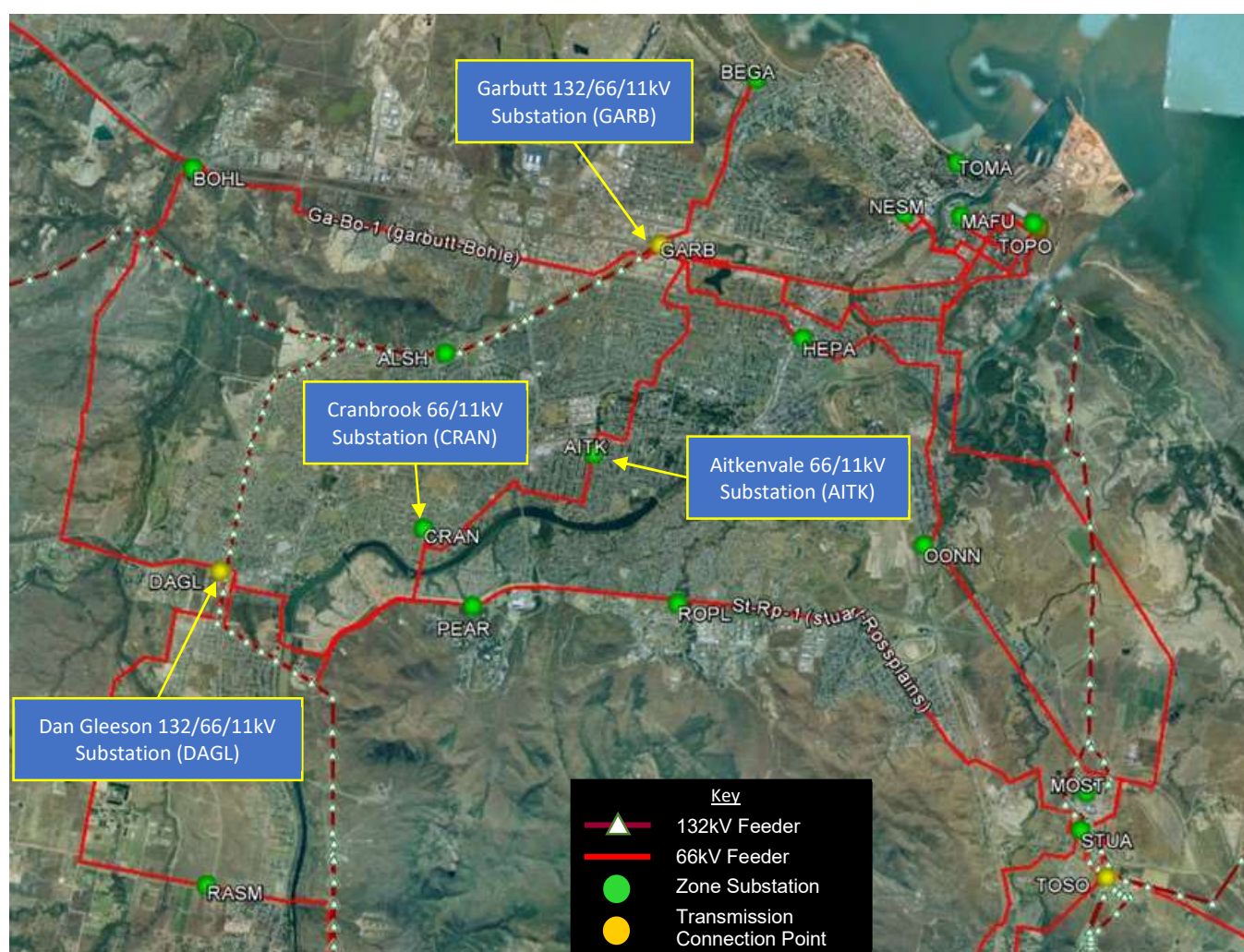


Figure 1: Existing network arrangement (geographic view)

Addressing Reliability Requirements in the Cranbrook Network Area Final Project Assessment Report

2.2. Existing Supply System

CRAN is located in Townsville and is supplied via two incoming 66kV feeders from T092 Dan Gleeson 132/66kV Substation and T046 Garbutt 132/66kV Substation.

CRAN was established in 1972 according to applicable design and construction standards during that time. CRAN consists of two incoming 66kV feeder bays (with no CBs), a 66kV bus section bay, 2 x 66/11kV 15/20/25MVA (ONAN/ONAF/OFDAF) power transformers and an indoor 11kV switchboard with 8 outgoing 11kV feeders (CB-02, CB-03, CB-04, CB-05, CB-06, CB-07, CB-08 & CB-10).

A schematic view of the existing sub-transmission network arrangement is shown in Figure 2 and the geographic view of CRAN is illustrated in Figure 3.

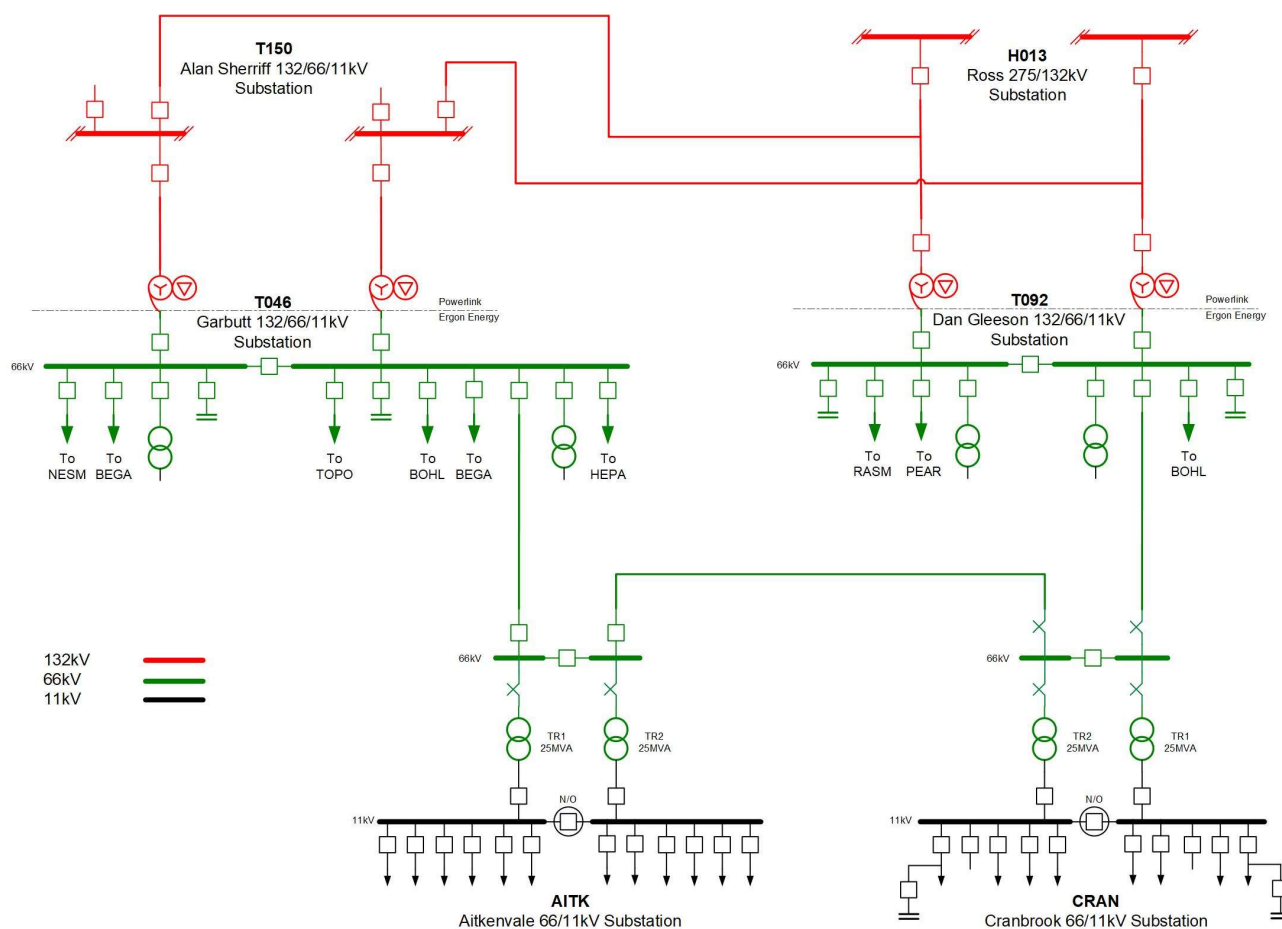


Figure 2: Existing network arrangement (schematic view)

Addressing Reliability Requirements in the Cranbrook Network Area

Final Project Assessment Report



Figure 3: Cranbrook Substation (geographic view)

2.3. Load Profiles / Forecasts

The load at CRAN comprises a mix of residential and commercial customers. The load is summer peaking, and the annual peak loads are predominantly driven by residential load, aged care facilities and shopping centres.

2.3.1. Full Annual Load Profile

The full annual load profile for CRAN over the 2021/22 financial year is shown in Figure 4. It can be noted that the peak load occurs during summer.

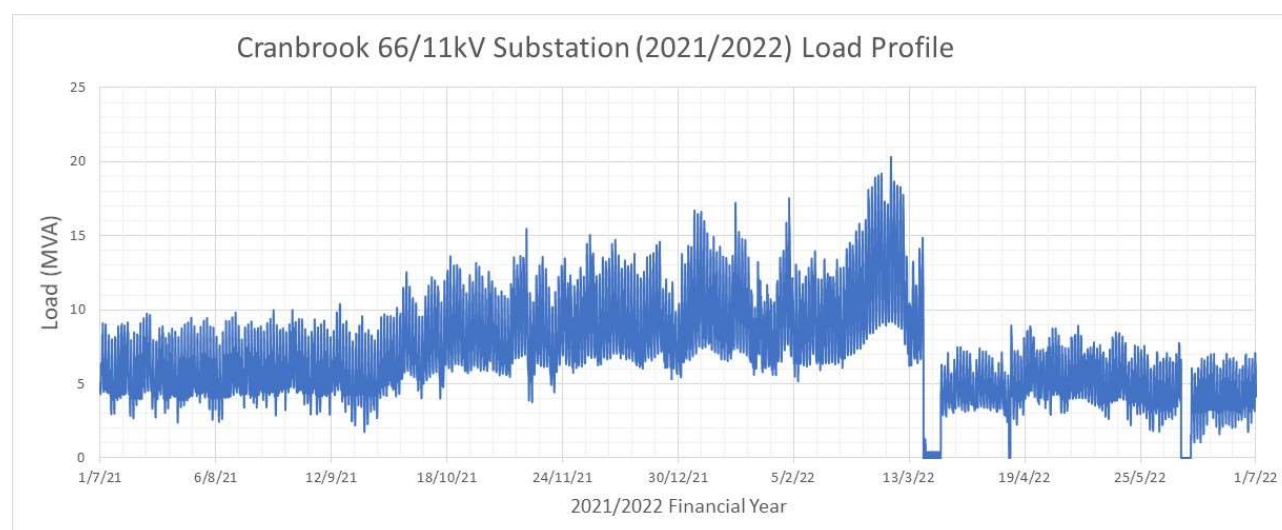


Figure 4: Substation actual annual load profile

Addressing Reliability Requirements in the Cranbrook Network Area Final Project Assessment Report

2.3.2. Load Duration Curve

The load duration curve for CRAN over the 2021/22 financial year is shown in Figure 5.

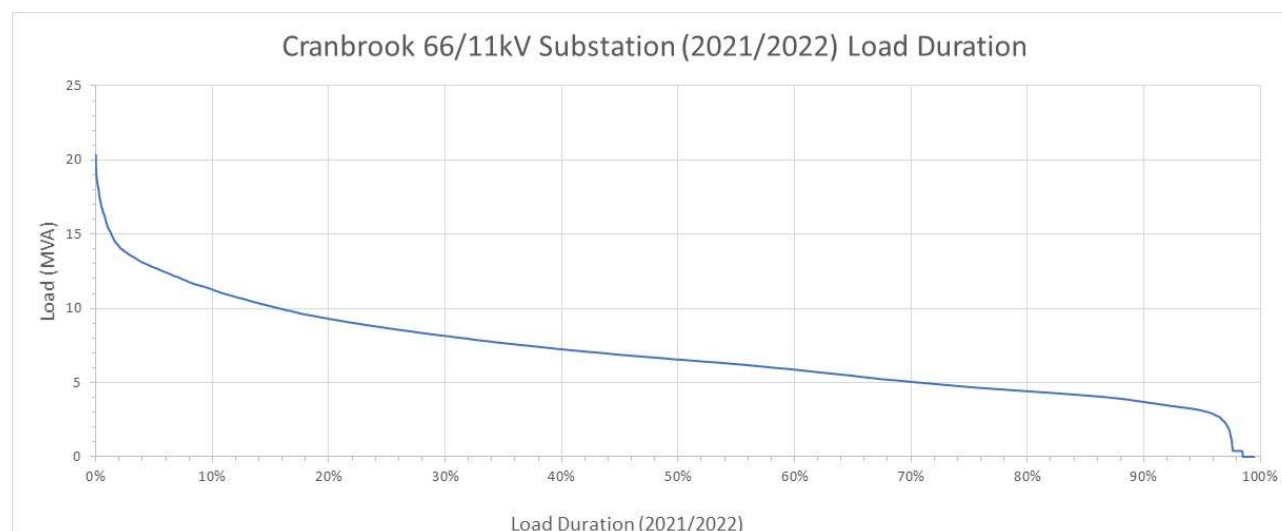


Figure 5: Substation load duration curve

2.3.3. Average Peak Weekday Load Profile (Summer)

The daily load profile for an average peak weekday during summer is illustrated below in Figure 6. It can be noted that the summer peak loads at CRAN are historically experienced in the late afternoon and evening.

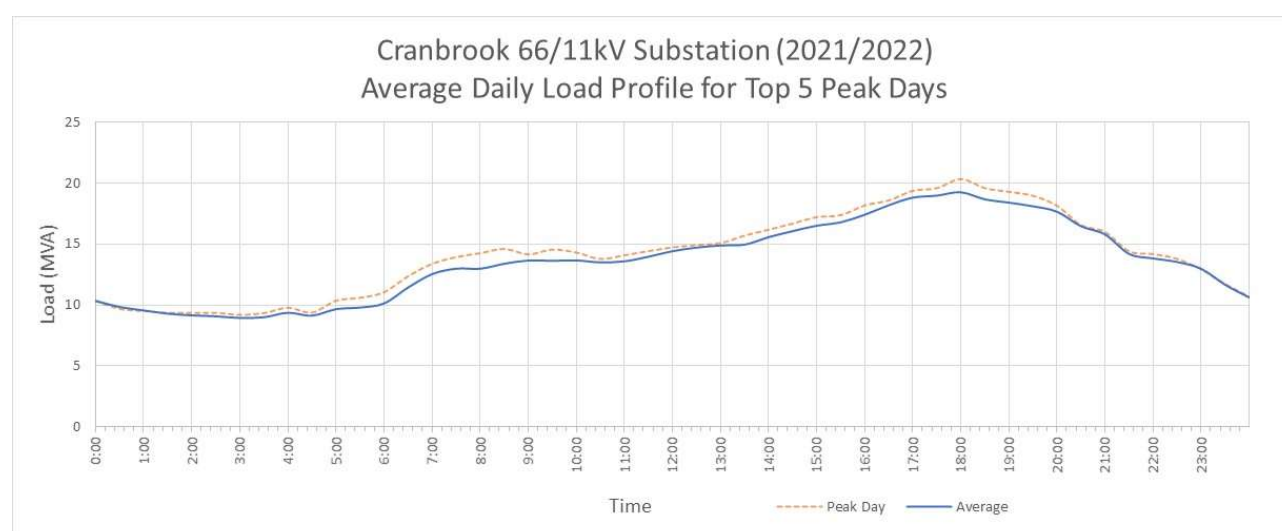


Figure 6: Substation average peak weekday load profile (summer)

2.3.4. Base Case Load Forecast

The 10 PoE and 50 PoE load forecasts for the base case load growth scenario are illustrated in Figure 7. The historical peak load for the past six years has also been included in the graph.

Addressing Reliability Requirements in the Cranbrook Network Area

Final Project Assessment Report

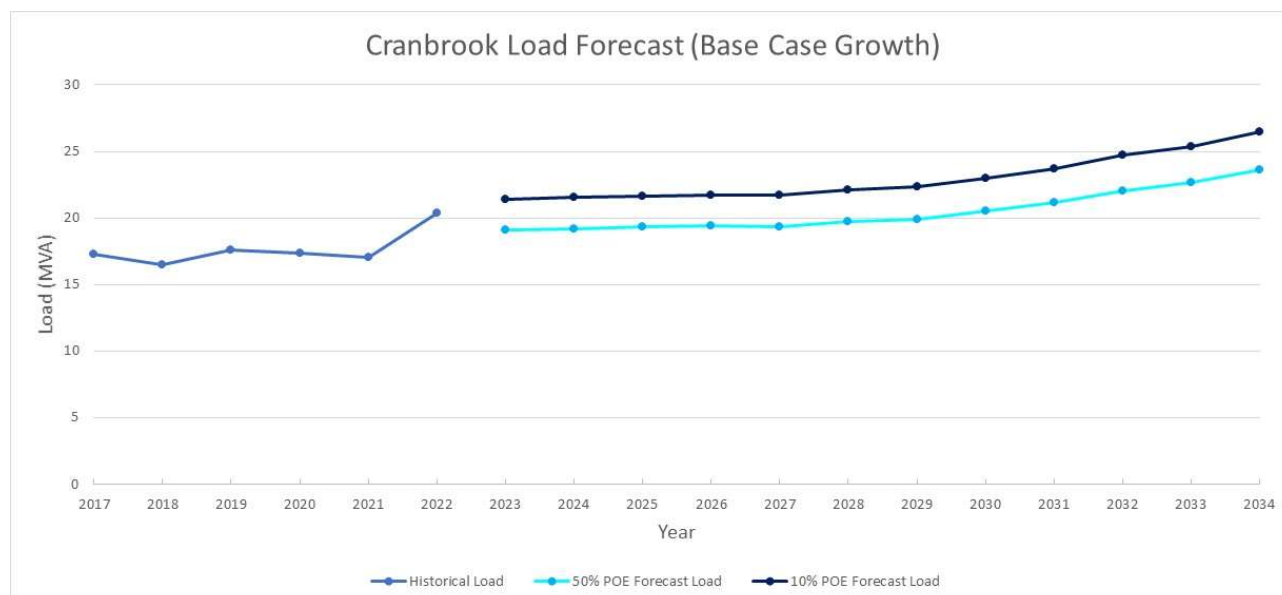


Figure 7: Substation base case load forecast

2.3.5. High Growth Load Forecast

The 10 PoE and 50 PoE load forecasts for the high load growth scenario are illustrated in Figure 8. With the high growth scenario, the peak load is forecast to increase over the next 10 years.

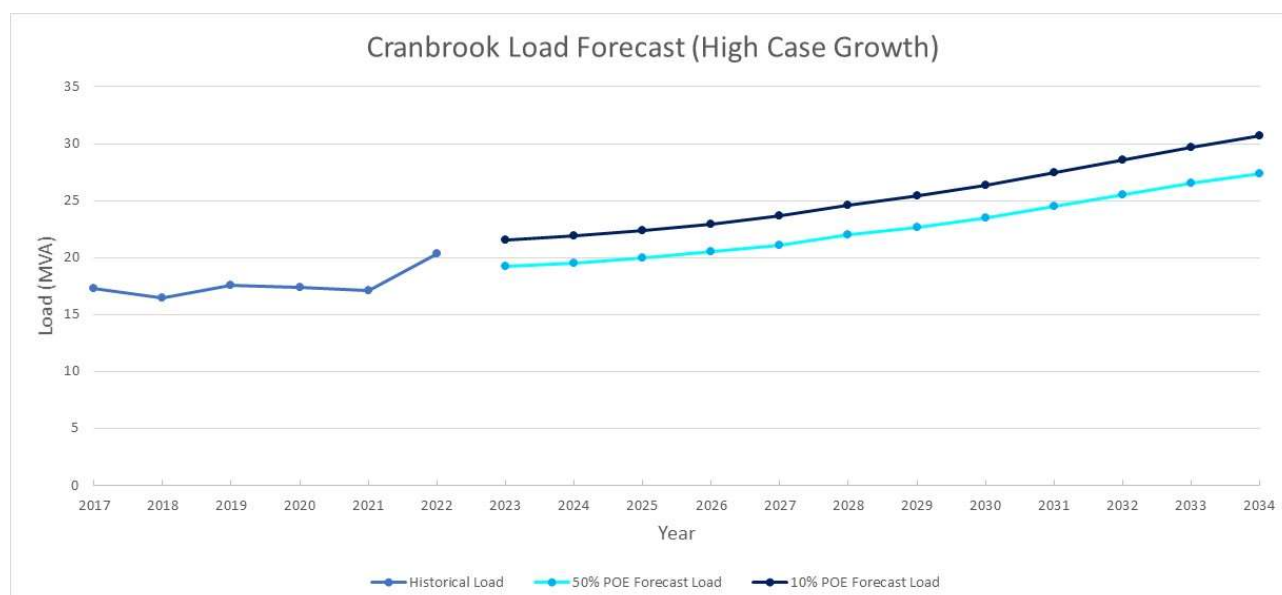


Figure 8: Substation high growth load forecast

2.3.6. Low Growth Load Forecast

The 10 PoE and 50 PoE load forecasts for the low load growth scenario are illustrated in Figure 9. With the low growth scenario, the peak load is forecast to remain relatively steady over the next 10 years.

Addressing Reliability Requirements in the Cranbrook Network Area Final Project Assessment Report

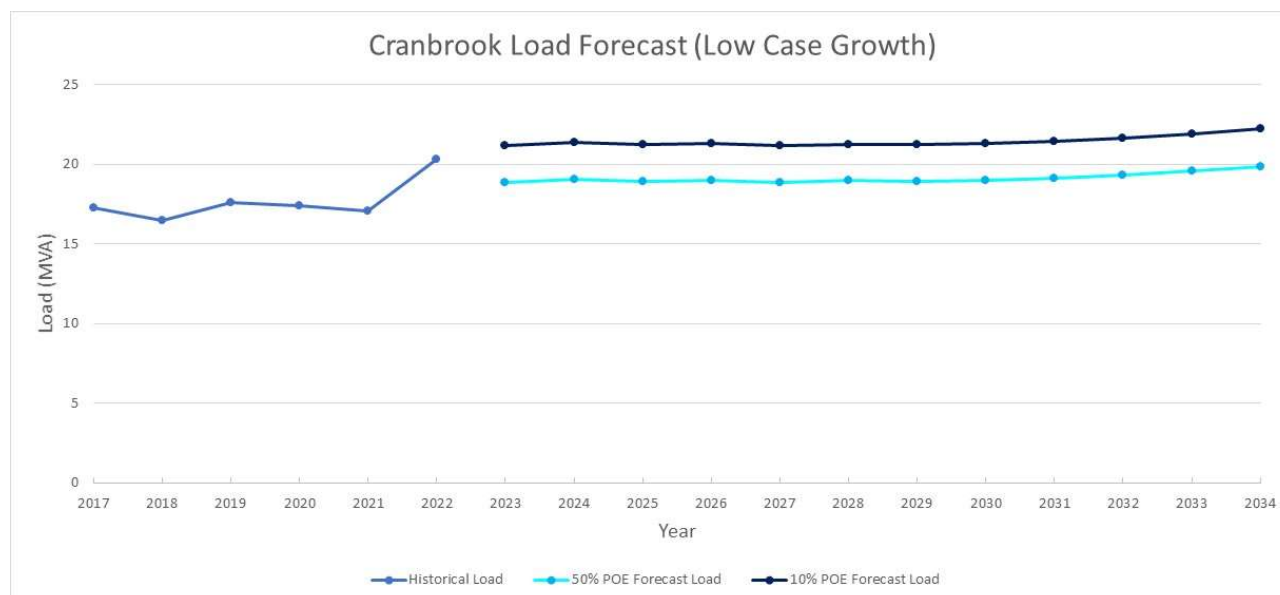


Figure 9: Substation low growth load forecast

Addressing Reliability Requirements in the Cranbrook Network Area Final Project Assessment Report

3. IDENTIFIED NEED

3.1. Description of the Identified Need

3.1.1. Aged and Poor Condition Assets

A recent condition assessment has highlighted that a number of critical assets are at end of life and are in poor condition. The condition of these assets presents a considerable safety and reliability risk.

Condition data indicates that the South Wales 11kV switchboard, the 66kV bus VT, one of the RTU's and a majority of the protection relays at CRAN are reaching end of life.

3.2. Quantification of the Identified Need

3.2.1. Aged and Poor Condition Assets

A recent condition assessment has highlighted that a number of critical assets are at end of life and are in poor condition. The condition of these assets presents a considerable safety and reliability risk.

Condition data indicates that the South Wales 11kV switchboard, the 66kV bus VT, one of the RTU's and a majority of the protection relays at CRAN are reaching end of life.

The deterioration of these primary and secondary system assets poses safety risks to staff working within the switchyard. It also poses a safety risk to the general public, though the increased likelihood of protection relay or 11kV CB mal-operation. Additionally, the poor condition of these assets significantly increases the likelihood of outages, resulting in a reduction in the level of reliability experienced by the customers supplied from CRAN.

Where Ergon Energy identifies an imminent asset safety risk, immediate temporary measures are put in place to ensure safety of staff and public until permanent remediation can be performed.

3.2.2. Risk Quantification Benefit Summary

Risk quantification analysis has been completed for each credible option which includes the value of customer reliability (VCR), cost of emergency replacement, safety and customer export curtailment value (CECV). Figure 10 shows the benefits of Option A in comparison to the counterfactual, which in this case is continuing the use of the existing substation equipment and maintenance and operation. The VCR benefits are attributed to the estimated decrease in plant failure rate after the proposed asset replacements in 2026.

Addressing Reliability Requirements in the Cranbrook Network Area Final Project Assessment Report

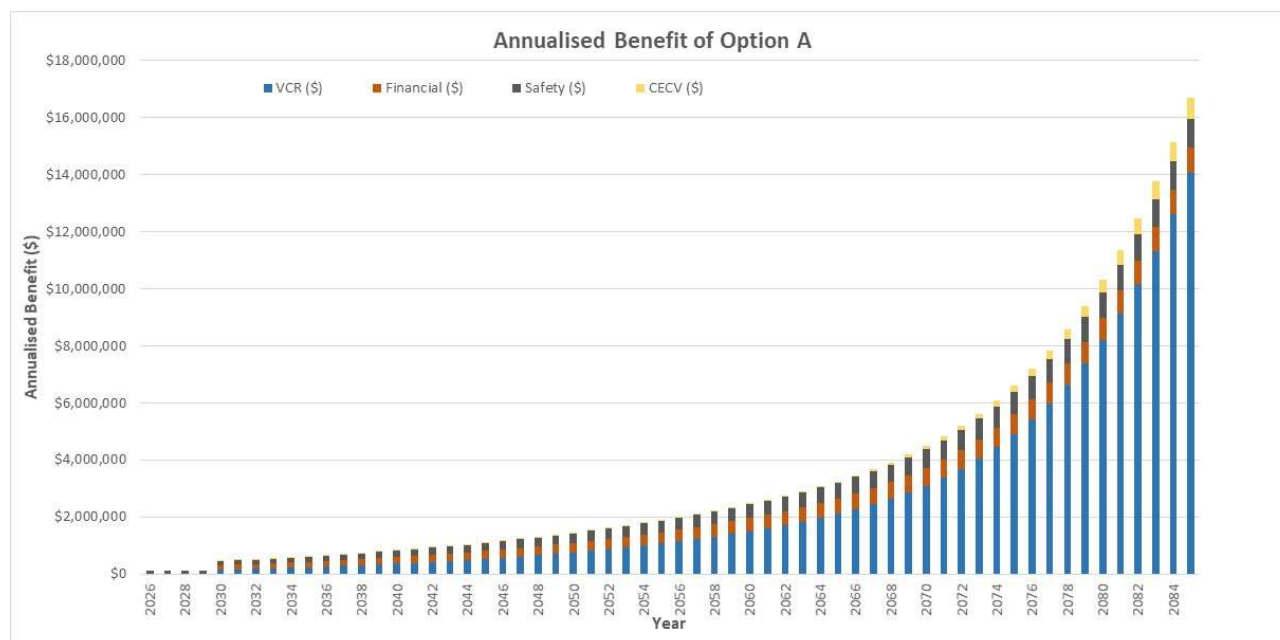


Figure 10: Annualised Benefits of Option A compared with Counter-factual

3.3. Assumptions in Relation to Identified Need

Below is a summary of key assumptions that have been made when the identified need has been analysed and quantified.

It is recognised that the below assumptions may prove to have various levels of correctness, and they merely represent a 'best endeavours' approach to predict the future identified need.

3.3.1. Forecast Maximum Demand

It has been assumed that forecast peak demand at CRAN will be consistent with the base case forecast outlined in Section 2.3.4.

Factors that have been taken into account when the load forecast has been developed include the following:

- load history;
- known future developments (new major customers, network augmentation, etc.);
- temperature corrected start values (historical peak demands); and
- forecast growth rates for organic growth.

3.3.2. Load Profile

Characteristic peak day load profiles shown in Section 2.3.3 are unlikely to change significantly from year to year and the shape of the load profile is assumed to remain virtually the same with increasing maximum demand.

Addressing Reliability Requirements in the Cranbrook Network Area

Final Project Assessment Report

4. CREDIBLE OPTIONS ASSESSED

4.1. Assessment of Network Solutions

Ergon Energy has identified one credible network option that will address the identified need.

4.1.1. Option A: Replace the 11kV switchboard, 66kV bus VT, RTU and protection relays

This option involves the replacement of the 11kV switchboard at CRAN with a new standard switchboard in a new control building, replacement of the 66kV bus VT, replacement of the C2025 RTU and replacement of protection relays in order to address the identified need.

A schematic diagram of the proposed network arrangement for Option A is shown in Figure 11.

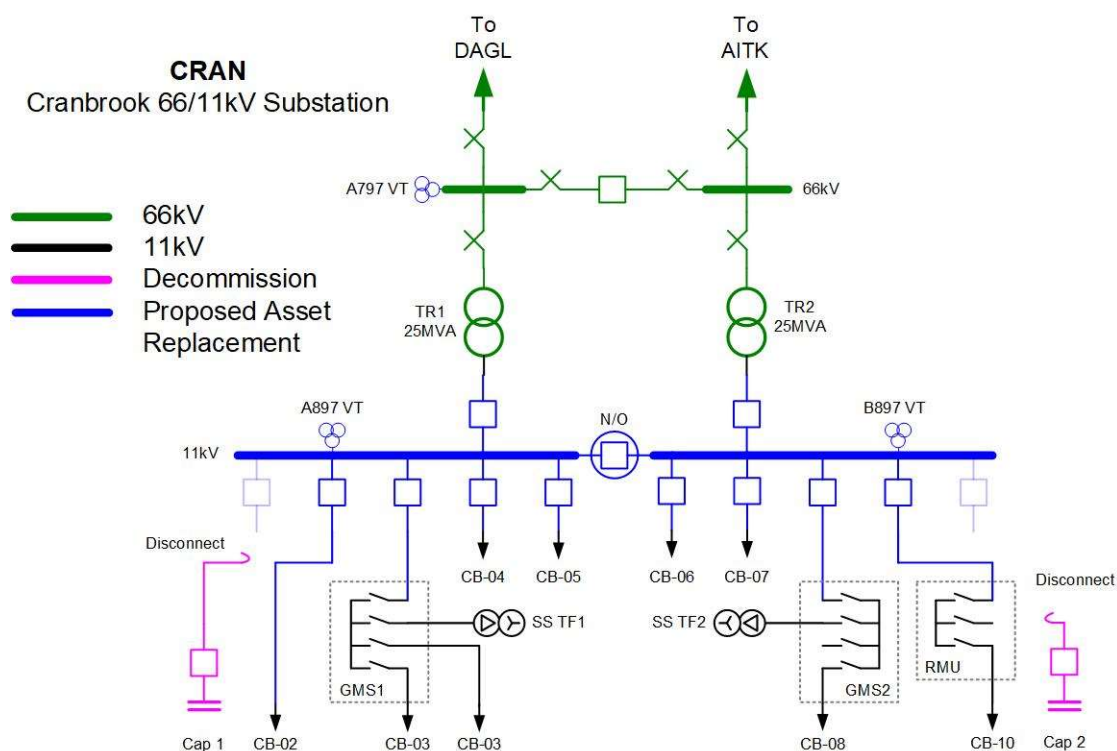


Figure 11: Option A proposed network arrangement (schematic view)

4.2. Assessment of Non-Network Solutions

Ergon Energy's Demand & Energy Management (DEM) team has assessed the potential non-network alternative (NNA) options required to defer the network option and determine if there is a viable demand management (DM) option to replace or reduce the need for the network options proposed.

Credible options must be technically and commercially viable and must be able to be implemented in sufficient time to satisfy the identified risk to the public and/or the network due to the identified constraints.

Addressing Reliability Requirements in the Cranbrook Network Area Final Project Assessment Report

4.2.1. Demand Management (Demand Reduction)

The DEM team has completed a review of the CRAN customer base and considered a number of demand management technologies. Asset safety and performance risks are the key project drivers (i.e. the need) at CRAN. It has been determined that most demand management options will not be viable propositions and have been explored in the following sections.

Network Load Control

The residential and commercial customer loads appear to drive the daily peak demand which generally occurs between 6:00pm and 10:00pm.

There are 3335 customers on tariff T31 and T33 hot water load control (LC). An estimated demand reduction value of 2001kVA¹ is available.

CRAN LC signals are controlled from T046 Garbutt 132/66kV Substation (GARB). The Tariff 33 and 31 hot water LC channels are dynamic (that is, it responds to exceedance settings not on a timetable) and the current control strategy only calls LC when the T046 Garbutt 132/66kV Substation 66kV load exceeds 91MW or the T092 Dan Gleeson 132/66kV Substation 66kV load exceeds 110MW or the Stuart Substation 66kV load exceeds 100MW. This strategy does not directly address demand peaks experienced at CRAN. Tariff 33 air-conditioning channels are under manual control of the operational control centre and are used as required. Therefore, network load control would not sufficiently address the identified need.

4.2.2. Demand Response

Four methods utilising demand response technology for deferring network investment are: Call Off Load (COL), Customer Embedded Generation (CEG), Large Scale Customer Generation (LSG) and customer solar power systems.

Customer Call Off Load (COL)

COL is an effective technique for deferring network investment where the need is for a short time period. However, in this instance, the need is required on a long-term permanent basis. There are a small number of large customers in the catchment area but the \$/kVA funding available for demand reduction is low therefore customer call off load has been assessed as not a viable proposition as it will not address the identified need, nor benefit the community.

Customer Embedded Generation (CEG)

CEG is an effective technique for deferring network investment where the need is for a short time period. The primary driver for investment in this instance is asset safety and performance. A short-term deferral of network investment by using CEG is not a technically or financially feasible option (due to the number of contracts required to be negotiated and managed).

¹ Hot water diversified demand saving estimated at 0.6kVA per system

Addressing Reliability Requirements in the Cranbrook Network Area Final Project Assessment Report

This option has been assessed as technically not viable as it will not address the identified network requirement.

Large-Scale Customer Generation (LSG)

LSG sites such as renewable energy generation, solar or wind farms of multiple MW's capacity constitute an opportunity to support substation investment by reducing demand on, and potentially providing reactive power support for substation assets.

This option could potentially address the identified need, however, has been assessed as technically not viable as there is no known existing or proposed LSG demand response available.

Customer Solar Power Systems

A total of 1645 customers have solar photo voltaic (PV) systems for a connected inverter capacity of 9652kVA.

The daily peak demand is driven by residential and commercial customer demand and the peak generally occurs between 6:00pm and 10:00pm. As such customer solar generation does not coincide with the peak load period.

Business customers with large solar arrays are deemed to present a significant opportunity for targeted load control or load curtailment if coupled with a Battery Energy Storage System (BESS). Contracting such customers is attractive as they represent a larger load across fewer customers and therefore are cheaper and easier to engage and contract.

PV systems with BESS present a future portfolio opportunity for potential demand response but currently this supply area has a very limited solar/BESS. Solar customers without a BESS will not meet the technical needs of the demand reduction as their solar contribution may not be available when the network un-met need is required.

4.2.3. Non-Network Solution Summary

Ergon Energy has not identified any viable non-network solutions internally that will provide a complete or a hybrid (combined network and non-network) solution to provide the magnitude of network support required in the CRAN supply area to address the identified need.

4.3. Preferred Network Option

Ergon Energy's preferred internal network option is Option A, to replace the 11kV switchboard at CRAN with a new standard switchboard in a new control building, replacement of the 66kV bus VT, replacement of the C2025 RTU and replacement of protection relays.

Upon completion of these works, the asset safety and reliability risks at CRAN will be addressed. The preferred option will provide the greatest reliability benefit for customers, whilst also reducing expenditure on obsolete and non-compliant assets while ensuring more efficient use of design and construction resources.

The estimated capital cost of this option inclusive of interest, risk, contingencies and overheads is \$6.8 million. Annual operating and maintenance costs are anticipated to be 1.5% of the capital

Addressing Reliability Requirements in the Cranbrook Network Area Final Project Assessment Report

cost. The estimated project delivery timeframe has design commencing in late-2023 and construction completed by mid-2026.

Addressing Reliability Requirements in the Cranbrook Network Area Final Project Assessment Report

5. MARKET BENEFIT ASSESSMENT METHODOLOGY

The purpose of the RIT-D is to identify the option that maximises the present value of net market benefits to all those who produce, consume and transport electricity in the National Electricity Market (NEM).

In order to measure the increase in net market benefit, Ergon Energy has analysed the classes of market benefits required to be considered by the RIT-D.

5.1. Classes of Market Benefits Considered and Quantified

The following classes of market benefits are considered material, and have been included in this RIT-D assessment:

- Changes in involuntary load shedding and Customer Interruptions caused by Network Outages

5.1.1. Changes in Involuntary Load Shedding and Customer Interruptions caused by Network Outages

Involuntary load shedding is where a customer's load is interrupted from the network without their agreement or prior warning. Ergon Energy has forecast load over the assessment period and has quantified the expected unserved energy by comparing forecast load to network capabilities under system normal and network outage conditions. A reduction in involuntary load shedding expected from an option, relative to the base case, results in a positive contribution to the market benefits of the credible option being assessed.

Involuntary load shedding of a credible option is derived by the quantity in MWh of involuntary load shedding required assuming the credible option is completed multiplied by the Value of Customer Reliability (VCR). The VCR is measured in dollars per MWh and is used as a proxy to evaluate the economic impact of unserved energy on customers under the RIT-D.

Ergon Energy has applied a VCR estimate of \$38.61/kWh, which has been derived from the AER 2022 Value of Customer Reliability (VCR) values. In particular, Ergon Energy has weighted the AER estimates according to the make-up of the specific load considered.

Customer export curtailment value (CECV) represents the detriment to all customers from the curtailment of DER exports (e.g. rooftop solar PV systems). A reduction in curtailment due to implementing a credible option results in a positive contribution to the market benefits of that option. These benefits have been calculated according to AER CECV methodology based on the capacity of DER currently installed and forecast to be installed within the CRAN supply area.

5.2. Classes of Market Benefits not Expected to be Material

The following classes of market benefits are not considered to be material for this RIT-D, and have not been included in this RIT-D assessment:

- Changes in voluntary load curtailment
- Changes in costs to other parties

Addressing Reliability Requirements in the Cranbrook Network Area Final Project Assessment Report

- Differences in timing of expenditure
- Changes in load transfer capacity and the capacity of Embedded Generators to take up load
- Changes in network losses
- Option value
- Other Class of Market Benefit

5.2.1. Changes in Voluntary Load Curtailment

The credible options presented in this RIT-D assessment do not include any voluntary load curtailment as there are no customers on voluntary load curtailment agreements in the CRAN area. Therefore, market benefits associated with changes in voluntary load curtailment have not been considered.

5.2.2. Changes in Costs to Other Parties

Ergon Energy does not anticipate that any of the credible options included in this RIT-D assessment will affect costs incurred by other parties.

5.2.3. Differences in Timing of Expenditure

The credible options included in this RIT-D assessment is/are not expected to affect the timing of other distribution investments for unrelated identified needs.

5.2.4. Changes in Load Transfer Capacity and the capacity of Embedded Generators to take up load

The credible options included in this RIT-D assessment are not expected to have an impact on the load transfer capacity or the capacity of embedded generators to take up load between the zone substations in the CRAN area.

5.2.5. Changes in Network Losses

Ergon Energy does not anticipate that any of the credible options included in the RIT-D assessment will lead to any significant change in network losses.

5.2.6. Option Value

The AER's view is that option value is likely to arise where there is uncertainty regarding future outcomes, the information that is available in the future is likely to change, and the credible options considered by the RIT-D proponent are sufficiently flexible to respond to that change².

² AER "Regulatory Investment Test for Distribution Application Guidelines", Section A6.
Available at: <http://www.aer.gov.au/networks-pipelines/guidelines-schemes-models-reviews/regulatory-investment-test-for-distribution-rit-d-and-application-guidelines>

Addressing Reliability Requirements in the Cranbrook Network Area Final Project Assessment Report

Ergon Energy does not consider that the identified need for the options included in this RIT-D would be affected by uncertain factors about which there may be more clarity in future.

5.2.7. Other Class of Market Benefit

Ergon Energy has not identified any other relevant class of market benefit for this RIT-D.

6. DETAILED ECONOMIC ASSESSMENT

6.1. Methodology

The Regulatory Investment Test for Distribution requires Ergon Energy to identify the credible option that maximises the present value of net economic benefit to all who produce, consume and transport electricity in the National Electricity Market.

Accordingly, a base case Net Present Value (NPV) comparison of the alternative development options has been undertaken.

6.2. Key Variables and Assumptions

The economic assessment contains anticipated costs of providing, operating and maintaining the options as well as expected costs of compliance and administration associated with each option.

The present value comparison summary includes all costs directly associated with constructing and providing the option. This includes the cost of land and easements currently owned or to be acquired for network augmentation.

Interest on borrowings is not included as a cost in the comparison of options as it represents a cost of project financing, and as such is accounted for in present value calculations through the discounting of the project cash flows at the regulated WACC. The interest on borrowings is included in the Total Project Cost for which approval is being sought as it represents a legitimate cost of network augmentation.

6.3. Net Present Value (NPV) Results

An overview of the initial capital cost and the base case NPV results are provided in Table 1.

Option	Option Name	Rank	Initial Capital Cost (\$ real)	Net Economic Benefit (\$ real)	PV of Capex (\$ real)	PV of Opex (\$ real)
A	Replace the 11kV switchboard, 66kV bus VT, RTU and protection relays	1	\$4,210,400	\$67,088,245	-\$4,210,400	-\$1,701,179

Table 1: Base case NPV ranking table

Option A was the only credible option assessed and is considered to provide the optimum solution to address the forecast limitations and is therefore the recommended development option.

Addressing Reliability Requirements in the Cranbrook Network Area Final Project Assessment Report

7. CONCLUSION

The Final Project Assessment Report (FPAR) represents the final stage of the consultation process in relation to the application of the RIT-D.

Ergon Energy intends to take steps to progress the proposed preferred option to ensure any statutory non-compliance is addressed and undertake appropriately justified network reliability improvements, as necessary.

7.1. Preferred Option

Ergon Energy's preferred option is Option A, to replace the 11kV switchboard at CRAN with a new standard switchboard in a new control building, replacement of the 66kV bus VT, replacement of the C2025 RTU and replacement of protection relays.

Upon completion of these works, the asset safety and reliability risks at CRAN will be addressed. The preferred option will provide the greatest reliability benefit for customers, whilst also reducing expenditure on obsolete and non-compliant assets while ensuring more efficient use of design and construction resources.

The estimated capital cost of this option inclusive of interest, risk, contingencies and overheads is \$6.8 million. Annual operating and maintenance costs are anticipated to be 1.5% of the capital cost. The estimated project delivery timeframe has design commencing in late-2023 and construction completed by mid-2026.

7.2. Satisfaction of RIT-D

The proposed preferred option satisfies the RIT-D.

This statement is made on the basis of the detailed analysis set out in this report. The proposed preferred option is the credible option that has the highest net economic benefit under the most likely reasonable scenarios.

Addressing Reliability Requirements in the Cranbrook Network Area Final Project Assessment Report

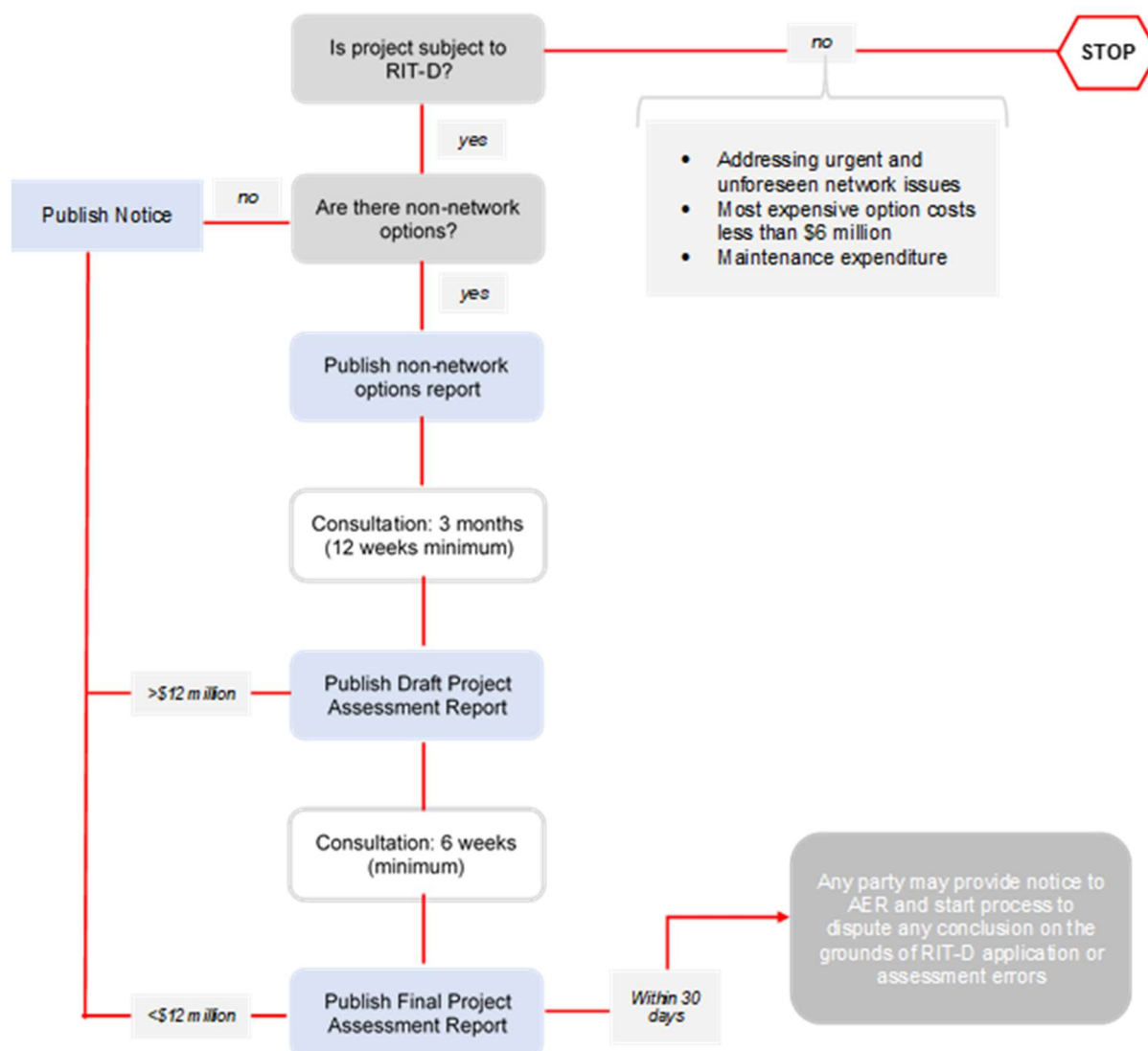
8. COMPLIANCE STATEMENT

This Final Project Assessment Report complies with the requirements of NER section 5.17.4(j) as demonstrated below:

Requirement	Report Section
(1) a description of the identified need for investment;	3
(2) the assumptions used in identifying the identified need (including, in the case of proposed reliability corrective action, why the RIT-D proponent considers reliability corrective action is necessary;	3.3
(3) if applicable, a summary of, and commentary on, the submissions received on the DPAR;	N/A
(4) a description of each credible option assessed	4
(5) where a <i>Distribution Network Service Provider</i> has quantified market benefits in accordance with clause 5.17.1(d), a quantification of each applicable market benefit of each credible option	5
(6) a quantification of each applicable cost for each credible option, including a breakdown of operating and capital expenditure	6
(7) a detailed description of the methodologies used in quantifying each class of costs or market benefit	5
(8) where relevant, the reasons why the RIT-D proponent has determined that a class or classes of market benefits or costs do not apply to a credible option	5.2
(9) the results of a NPV analysis of each credible option and accompanying explanatory statements regarding the results	6.3
(10) the identification of the proposed preferred option	7.1
(11) for the proposed preferred option, the RIT-D proponent must provide: <ul style="list-style-type: none"> (i) details of the technical characteristics; (ii) the estimated construction timetable and commissioning date (where relevant); (iii) the indicative capital and operating costs (where relevant); (iv) a statement and accompanying analysis that the proposed preferred option satisfied the RIT-D; and (v) if the proposed preferred option is for reliability corrective action and that option has a proponent, the name of the proponent 	7.1 & 7.2
(12) contact details for a suitably qualified staff member of the RIT-D proponent to whom queries on the final report may be directed.	1.3

Addressing Reliability Requirements in the Cranbrook Network Area Final Project Assessment Report

APPENDIX A – THE RIT-D PROCESS



Source: AEMC, *Rule determination: National Electricity Amendment (Replacement expenditure planning arrangements) Rule 2017*, July 2017, p. 64.