

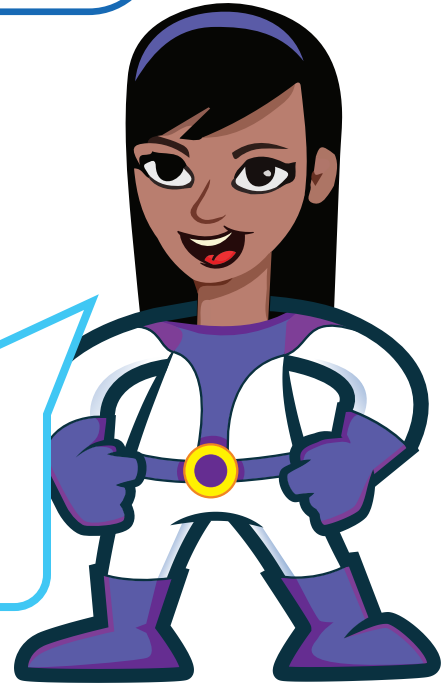


## KEEPING SAFE AFTER A CAR ACCIDENT

### **Dear Parents and Guardians,**

This term at school your child has been learning about electricity and electrical safety through our Safety Heroes program. You can find out more about the program at [networkqld.com.au/safetyheroes](http://networkqld.com.au/safetyheroes)

**READ THESE TIPS TO KEEP YOU AND YOUR FAMILY SAFE IF YOU'RE INVOLVED IN A CAR ACCIDENT. KNOWING WHAT TO DO COULD SAVE A LIFE.**



## AFTER AN ACCIDENT: STAY. CALL. WAIT.

- Don't panic. Try to remain calm.
- Treat all powerlines and other electrical equipment as if they are 'live'.
- **STAY** in the car until the power has been isolated and the powerlines removed.
- **CALL** triple zero (000) immediately to report powerlines down and a life threatening situation.
- **WAIT** for help. Don't risk being electrocuted by attempting to leave the car before power is disconnected.
- Warn bystanders to stay a minimum of 10 metres from the car and anything else in contact with powerlines at the accident site.
- Don't attempt to rescue or allow others to approach the car in contact with powerlines. All too often secondary injuries or deaths occur because of others trying to help.



**More safety information available at:**

[ergon.com.au/safetyheroes](http://ergon.com.au/safetyheroes)  
[energex.com.au/safetyheroes](http://energex.com.au/safetyheroes)



Part of Energy Queensland

Car accidents can bring down overhead powerlines or cause damage to electrical equipment at ground level. If you are involved in an accident or come across one, it is important to remember that the car and anything else, such as fences and trees, in contact with powerlines could be 'live'.

**REMEMBER, IF A CAR ACCIDENT BRINGS DOWN POWERLINES, NEVER APPROACH THE CAR TO ASSIST. ALWAYS TREAT ALL FALLEN POWERLINES AS IF THEY ARE 'LIVE'.**



## WHAT TO DO IF YOUR CAR BRINGS DOWN POWERLINES?

After an accident has brought down powerlines, the **SAFEST** place to be is **INSIDE** the car.

An emergency evacuation is extremely dangerous and should only be attempted if it is absolutely necessary, such as the car is on fire.

**If you must escape from the car, follow these steps:**



**2** If there's an immediate danger, like fire, and evacuation is **ABSOLUTELY necessary**, assess your escape route and check for fallen powerlines.

**1**

**STAY**  
in the car

**CALL**  
000

**WAIT**  
for help



**3** Exit the vehicle by jumping - make sure to land with both feet together.



**4** When jumping, **don't touch the vehicle and the ground at the same time.**



**5** Once landed with both feet together (careful not to stumble or fall), jump or shuffle with your feet together away from the vehicle.



**6** Move in this way until you are at least 10 metres away from the vehicle. **DO NOT go back.**

More safety information available at:

[ergon.com.au/safetyheroes](http://ergon.com.au/safetyheroes)  
[energex.com.au/safetyheroes](http://energex.com.au/safetyheroes)



Part of Energy Queensland