

Whitsundays Network Upgrade Project Update



Part of Energy Queensland

April 2023

Blue skies clear the way for good progress during April

Cannonvale substation takes shape

With the rain holding off a bit over the past month, the team working at Cannonvale substation are making good progress, with the outdoor switching yard now taking shape. The foundations for the electrical equipment are now complete, and the new substation fence is going up around the site – see figures 1 & 2.



Fig 1- Aerial view of work in progress at the Cannonvale substation.



Fig 2 - New security fence being installed around substation.

Once this phase of civil work is complete, the contractors will hand over the site to Ergon Energy Network's crews, who will commence the construction of the steelwork and outdoor equipment in the switching yard.

Proserpine communications tower

Conduits for cables have been installed and the foundations for the new telecommunications tower at Proserpine are now complete – see figure 3.

This work paves the way for Ergon Energy Network's crews to install the new telecommunications tower in early May.



Fig 3- The foundations for the Proserpine communications tower are now complete.

The new telecommunications tower is needed because of the mountainous terrain across the area.

While beautiful, these ranges can impede our remote communications between substations, so as part of the project, we'll give the communications equipment a boost and install the new tower in Proserpine to relay signals between the substations.

Cable duplication works under way

Crews working to install the duplicate 66,000 volt (66kV) underground cable will be highly visible on the streets between Cannonvale and Jubilee Pocket substations, with work progressing in several locations across the Whitsundays.

Shingley Drive

In early April, the site where two new concrete poles will be installed along Shingley Drive was prepared with the clearing of vegetation – see figure 4. The new poles are scheduled to be stood on the 10th and 11th May. The vegetation clearing and pole installations have been scheduled to avoid the peak Easter, ANZAC and May Day holidays.



Fig 4 – Clearing completed in early April in preparation for the poles to be stood in early May.

Because of the busy location, and the work site on a narrow corridor adjacent to the road, traffic controllers will be on site to maintain safety for the work crews and Marina patrons.

During works, drivers can expect short delays with vehicular traffic limited to a single lane on Shingley Drive between the two Marina carparks.

While each of the new poles is lifted into place, the road will be closed for a short period of time.

We have worked closely with the team at Coral Sea Marina to schedule the work outside of peak periods, however we ask staff and visitors to be patient and travel safely while these critical works are underway.

Mazlin Street to Broadwater Avenue

The team from Zinfra – the civil and electrical contractors installing the new cable – have been making significant progress on the installation of the conduit that will house the second underground 66kV cable between Cannonvale and Jubilee Pocket substations.

Hidden below the busy streets of the Whitsundays is a labyrinth of underground services including power, water, sewerage, and telecommunications services. To ensure the construction works do not disturb these underground services, Zinfra have been 'potholing' sections of the line route to locate the existing network of pipes and conduits that house these services – see figure 5.



Fig 5 - Potholing to locate underground services down Mazlin Street into Broadwater Avenue before excavation commences.

When the exploratory potholing is complete, and the other underground services have been identified, the crews can schedule the works to install the cable conduits. This will involve excavating open trenches along the street and laying conduit in the trenches, which will then be backfilled.

Trenching and conduit installation is already well progressed along Broadwater Avenue from Mazlin Street into the park behind the lagoon – see figure 6.



Fig 6 - Conduits are being installed along Broadwater Avenue for underground cables.

Airlie Beach Foreshore

The Zinfra team have been proving the integrity of the conduits that were previously installed in several locations along the foreshore during Council's foreshore development works. Proving the conduits involves the use of a mandrel – see figure 7 – which is drawn through the conduit using a draw rope. This important test is conducted to ensure that the conduits are sound before pulling through the high voltage electrical cable, as any structural flaws or debris in the conduits can damage the cable when it is hauled through.



Fig 7 - A conduit mandrel used to clear debris from conduits.

The new sections of conduit currently being installed – see figure 8 - will be connected to those sections that were previously installed during the earlier foreshore development works, joining at the back of Hogs Breath Cafe.

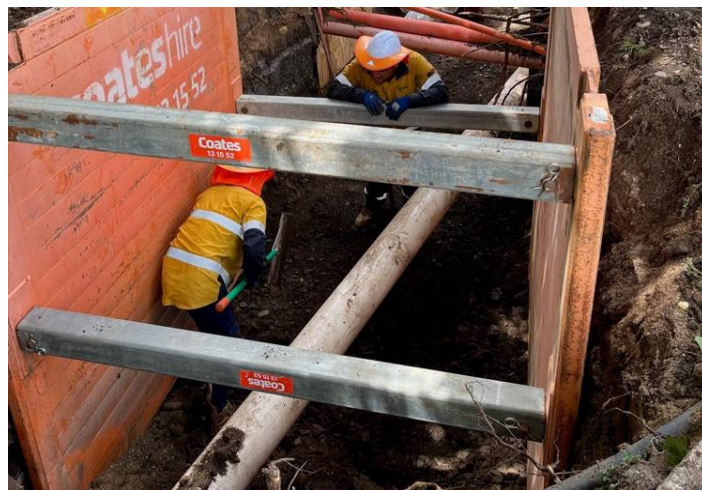


Fig 8 - Trenches for new conduit being excavated, where they will join with conduit previously installed during foreshore development works.

We're wild about wildlife in the Whitsundays!

While completing early work along the line route for the new 66kV underground cable, the Zinfra team spotted a Bush Stone Curlew sitting on her nest. She had built her nest in the middle of the work site, behind the famous 'Welcome to Airlie Beach' sign, at the summit of the Airlie Beach hill. We try, wherever possible, to leave wildlife undisturbed. Where that's not possible, we bring in the experts, so the crew immediately stopped work and contacted Ergon's Project Coordinator and Environmental Advisor for advice.

They contacted local wildlife carers extraordinaire, Kerry and Di from Fauna Rescue Whitsundays, to assist with relocating the nest. Unfortunately, after the nest was safely relocated the male curlew attacked the clutch. With little hope of survival, Di took the remaining egg into her care to be incubated.

Miraculously a week later, thanks to Di's dedication, this little guy hatched! The project team have dubbed him Abe – having first crossed paths on the 'Airlie Beach excavation'. After a month or so in Di's expert care, Abe has more than tripled in size and is doing amazingly well – see figure 9.



Fig 9 – a). Abe the day he was born. b). Abe one day old. c). Abe at one month old. d). 6 weeks old and growing up fast and happy.

Thanks to the Zinfra construction crew on the ground, Ergon's project team and the amazing carers at

Fauna Rescue Whitsundays, Abe will eventually be released back into the wild to one day have a family of his own.

Getting in touch with us

To keep up to date on the project, to provide feedback, or to **register for future updates via email or SMS**, scan the QR code or visit our project web page [Whitsundays network upgrade - Ergon Energy](https://www.ergon.com.au/whitsundays-network-upgrade).



You can also contact our Senior Community Engagement Advisor, Kate Austin on 1300 653 055 or email us at: NetworkProjectEngagement@energyq.com.au

